



Intensive English preparatory courses

Study in Czechia



Czechia

The Czech Republic is very well connected to its neighbours, both geographically and culturally. Due to its position between Germany, Poland, Austria, and Slovakia, most major cities of Central Europe like Vienna, Berlin, Warsaw, or Budapest are literally just around the corner. Culturally, these countries overlap and mingle – especially concerning the language roots, certain aspects of cuisine, and a portion of the habits and customs.

The capital city of Prague

The Queen of the Cities, The City of a Hundred Spires, The Jewel in the Heart of Europe, Mother of all the Cities. Despite being in the very centre of modern Europe, Prague somehow managed to keep all its medieval and romantic charms, secrets, and names. If the maxim is to see Rome and die, for Prague, it is the very opposite: Once you've seen it, you'll want to move in.

Not to be mistaken with a bunch of its namesakes in the USA, Prague or Praha is so much more than a well-preserved monument of past ages. From the synagogues of Jewish Town to the illuminated walls of Prague Castle, every corner of the city is very much alive, breathing and pulsating with new energy. And it has many surprises hidden up its sleeves.

Small, green, affordable:

Even though Prague is the capital of the Czech Republic, compared to its siblings across Europe, it remains relatively small. It has less than one-eighth of London's population, half of Rome's, and approximately a third of Berlin's. This allows the city to maintain its very specific character without being too vast to be properly comprehended. It is one of the greenest and most compact capitals you'll ever see and a much more affordable variant than the rest of them.

The cultural hub in the centre of Europe

Prague is a city of free culture and artists, partially due to its large population of students and expats. The concentration of theatres, cinemas, music halls and clubs (including the iconic Reduta Jazz Club, where even Bill Clinton gave one of his famous sax performances), exhibition halls, and festivals of any conceivable theme is just overwhelming. There virtually isn't a day in the week when you can't find a cultural event taking place somewhere.

Prague isn't just a place to visit. It's a place to embrace, to experience, and to fall in love with. Come and see for yourself.

Study at Prague Language Institute

Say goodbye to dull texts, tedious memorization of irregular verbs, and monotonous tests. PLI offers an English training experience specifically designed to cater to the interests and age group of learners. Our interactive approach ensures that every student actively participates in discussions and practical exercises, creating a relaxed and friendly classroom environment.

With all our teachers being native speakers, students are fully immersed in a language-rich environment from day one, communicating exclusively in a foreign language.



Situated in the heart of the city's historical center, our location offers convenient access. Each classroom is equipped with climate control and projectors.

Additionally, students have access to free Wi-Fi throughout the premises, facilitating seamless connectivity.

Upon arrival, students undergo comprehensive written and oral assessments and are then grouped into small, knowledge-level-based classes (up to 15 people).

Textbooks and course materials are selected by our methodologists. Material choices reflect student interest, cultural diversity, world perspectives, and address all types of diverse learners. At the end of the course, all students are awarded with certificates of completion.





52 000

**international
students
currently study in
Czechia**

Join the community of international students in Czechia! Currently, 304,000 students are studying at Czech universities, out of which about 52,000 are international students in degree programmes and 15,000 are in short-term study programmes.



Intensive English course



Embarking on a gap year in Prague to study an intensive English course offers numerous benefits for language learners. Intensive nature of the course ensures rapid progress in language proficiency, equipping students with enhanced vocabulary, grammar, and pronunciation skills. The multicultural environment fosters an inclusive and diverse community, allowing for meaningful connections and intercultural exchanges.

Moreover, Prague's central location in Europe offers easy access to other captivating destinations, providing students with opportunities for travel and exploration during their gap year. Ultimately, studying English in Prague during a gap year promises not only academic advancement but also personal development, cultural enrichment, and unforgettable experiences that will shape students' lives for years to come.

Year Intensive course



Study program: **770 academic hours**

Intensity: **20 hours per week**

Entry level: **A1, A2, B1**



Course dates: **September to May**

Duration: **39 weeks**

Application deadline:



for EU students: **August, 1**

for non-EU students: **June, 1**

Semester Intensive course



Study program: **480 academic hours**

Intensity: **20 hours per week**

Entry level: **A2, B1**



Course dates: **January to June**

Duration: **24 weeks**

Application deadline:



for EU students: **December, 1**

for non-EU students: **November, 1**

from €3700

During the course students will have a chance to participate in a range of social and cultural activities, day trips and guided tours.

Intensive Czech course



Humanities

Philology, Pedagogy, Political Science, Psychology, Public Relations, International Relations.



IT

UX/UI Design, System Administrators, C/C++ Developers, JavaScript Developers, IT Managers, Big Data Developers.



Economics

Management, Finance and Auditing, International Business and International Trade, Tourism, Art Management.



Technical

Engineering, Construction and Industrial Design, Mechanical Engineering, Automotive Engineering, Electrical Engineering, Bioengineering.

from €4900



Duration: 40 weeks



Course Dates: From September 1st to August 31st



Initial Payment: 900 euros, installment plans available for 2-5 payments.

Preparation for admission to specialties of the chosen profile. The course includes the study of the Czech language and preparation for two entrance exams in the following core subjects of your choice: English, Mathematics, SCIO, Physics, Biology, Chemistry, Computer Science.

✓ **774 academic hours of Czech language + 26 academic hours of an adaptation summer course**

✓ **Two core subjects, each with 100 academic hours**

✓ **Student visa of your choice (Type 24 or Type 99)**

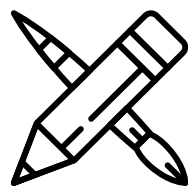
✓ **Premium support package #plifamily**

You can even study for free in Czech universities! It is possible to receive free education in the country's language in state Czech universities. You only need to pass an entrance exam in Czech or provide a certificate from a language school. Many students choose to come for a preparatory year to learn the Czech language and then pursue their studies for free in universities until the completion of their bachelor's, master's, or MBA programs.



Medical

A comprehensive program to prepare for admission to medical specialties, including pharmacy, veterinary medicine, and dentistry. Most medical faculties require a C1 level certificate, so students start their education two months earlier than other groups. Proficiency in core subjects is achieved through courses organized by practicing physicians and university professors



Creative

A comprehensive program to prepare for admission to creative specialties, including architecture, illustration, design, painting, and others. Most creative universities require applicants to have a knowledge of Czech language at a level not lower than B1 by February when the entrance exams take place. During the course, students prepare portfolios with the guidance of creative studio specialists and study art history

from €5650



Duration: 49 weeks



Course Dates: From July 1st to August 31st



Initial Payment: 900 euros, installment plans available for 2-5 payments.

These courses include an additional intensive summer course lasting 8 weeks, which provides an advantage in learning the Czech language. It allows Creative Course students to achieve a B1 level by December, while Medical Course students can obtain a C1 level certificate by the end of the year.

✓ **894 academic hours of Czech language**

✓ **894 academic hours of Czech language**

✓ **240 academic hours of core subjects: chemistry, biology, physics.**

✓ **130 academic hours of classes in the creative studio**

✓ **Premium support package #plifamily**

✓ **Premium support package #plifamily**

✓ **Student visa of your choice (Type 24 or Type 99)**

✓ **Student visa of your choice (Type 24 or Type 99)**



Česká
zemědělská
univerzita
v Praze

Prague Language Institute is a long-term partner of one of the largest and respected state universities in the Czech Republic - Česká Zemědělská Univerzita and has a cooperation agreement with the Faculty of Economics and Business Management, which allows our students, if they wish, to apply for a student visa of type D/VC/24



100%

of PLI alumni
would
recommend
our school to
their friends

Based on the anonymous question-
naire all our alumni fill out at the
end of the course

Average overall experience rating is
9,4/10 (based on over 650 responses)

Top universities

Czech Republic's universities have been alma maters to many successful individuals, and the quality of education has remained at the highest level for centuries. If you are faced with the choice of where to pursue education abroad, then choose the Czech Republic!



Univerzita Karlova v Praze

The main university in the Czech Republic, one of the oldest universities in Central Europe, and one of the world's oldest universities.

Established in 1438, it ranks among the top 500 universities in the world. The university has more than 50,000 student

cuni.cz



Česká zemědělská univerzita v Praze (ČZU)

For 113 years, the university has been producing top-notch professionals not only in the field of agriculture but also in economics and management. It is one of the largest educational institutions in Prague and the most popular university for students coming through the Erasmus program

czu.cz



Vysoká škola Ekonomická v Praze (VŠE)

A higher education institution located in Prague. The university was founded in 1953 and is currently the largest economic university in the Czech Republic. The university ranks 73rd in The Financial Times ranking

vse.cz



České vysoké učení technické v Praze (ČVUT)

It is highly popular among international students. It trains technical specialists, including those in IT, architecture, and engineering in all fields. It is the oldest technical university in Europe

cvut.cz

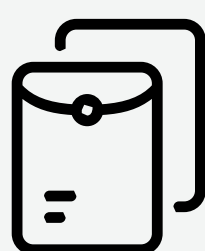


+20 other universities

Graduates of the courses have access to admission at most state universities as well as dozens of private universities

Our services

In addition to our language courses, students have the option to explore a diverse range of services. Our offerings include long-term academic programs, immersive vacations in the Czech Republic, and valuable student internships. Furthermore, we provide comprehensive educational services, such as certified translations, document nostrification, university pathway programs, and counseling services, ensuring that students receive comprehensive support throughout their educational journey.



UNIVERSITY PLACEMENT

we help students to choose the best uni in Czechia



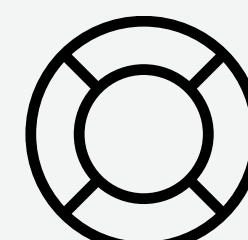
VISA

we help with obtaining short-term and long-term visas



LANGUAGE COURSES

we teach Czech and English languages



SUPPORT 24/7

our counsellors are available at all times



NOSTRIFICATION

we help you recognize your previous education

How to apply for a visa?

Any incoming student from countries that aren't a part of the EEA (European Economic Area) has to submit an official application. This can be done at the Czech embassy or at a permanent diplomatic mission of the Czech Republic in the country of your origin. For certain nationalities (the US or Japanese citizens), this can be done on any Czech embassy.

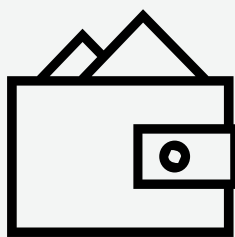
There is a variety of required documents you'll have to submit. All of these need to be submitted in person at the Czech Embassy. We highly recommend that you book an appointment well ahead of time to avoid any inconveniences and prolonged waiting.

Required documents:

- Completed application form
- Valid travel document (passport)
- Passport photographs – if an image record of the applicant is not taken at the embassy
- Police clearance certificate (extract from the Penal Register)
- Evidence of funds to cover your stay (approx. 5000 EUR)
- Document stating that you will be accommodated for the period of your stay in the Czech Republic (can be acquired from PLI if you book one of our accommodation options)
- Document proving the purpose of your stay:
For study purposes, you will need a confirmation of acceptance for studies (provided by PLI)
- Medical travel insurance covering the period of your stay
- Parental consent (for students under 18)

Processing time may be up to 90 days (120 in complex cases), counted from the day your application was filled and submitted at the embassy. Once obtained, the long-term visa is valid for a maximum of 12 months.
Administration fee: 2500 CZK (cca 110 EUR/120 USD)

Living costs



To cover your living expenses, you'll need around EUR 500-750 per month. Although your monthly costs can vary depending on your lifestyle, what matters most is where you study. In larger cities like Prague or Brno, you'll pay more for accommodation, which is the biggest expense. However, you can save money by staying in a student dorm.

Students in Czech benefit from discounts and special offers. For instance, student transport ticket costs only 5 EUR per month. After admission to universities students apply for ISIC card and get special offers for museum tickets, cinemas, bus trips and flight tickets.

Education:

course fee	2000-6000 €
nostrification (state fee)	40 - 120 €
visa extension fee	≈ 100 €
university application	20-40 €

Accommodation:

Student dormitory (Prague)	350-550 €
One-bedroom apartment	700-1000 €
Shared apartment (private bedroom)	300-600 €

Personal expenses:

meals	from 200 €
free time activities	from 100 €
internet and mobile access	10 - 50 €
transport ticket	5 - 20 €

Test drive your student life in Europe: come for the holidays!

20 days / 19 nights



First payment: 500 EUR



Intensive English or Czech with native speakers



Age: 12-19 years old



Dates: July 14 -August 2
August 5 - August 24



Total cost: 1690 EUR

Summer or winter camp in Prague with trips to Germany, Italy and France

Prague Language Institute invites you to spend the best holidays of your life in Europe! Our camp is a chance to visit four European countries: the Czech Republic, Germany, Italy, and France, raise your English level or start learning Czech with native speakers, find new friends, and take a real test drive of the life of European students. The culmination of the summer adventure will be our cool trips: Italy, where you will see with your own eyes the canals of Venice, taste the best ice cream in the world, and spend the whole day on the sandy beach of the Adriatic Sea; and the beauty of Paris, a stroll along the River Seine on a boat, a view of the city from the top of the Eiffel Tower, the Louvre and its masterpieces, and of course, a whole day of magic at Disneyland, which will end with a phenomenal light show!



You can view all our holiday programs on the PLI website: prag-study.com

“
The year in PLI not only paved the way for me to enter a state university but also gifted me with close friends without whom the relocation to a new country would have been much more challenging. And the supervisors became like a second family to me, assisting, advising, and supporting me throughout the entire course.
”

Narmina Maharova, a graduate of PLI, student VŠE



Student accommodation

Living in a students' residence is the most popular and affordable option of accommodation of future students who come to the Czech Republic to get higher education.



01 THE FIZZ apartments - premium starting at 550 euro per month

THE FIZZ is an ultra-modern concept residence in which, in addition to new modern rooms, common areas, a games room and a mini-cinema, a sports hall and much more are available for residents.

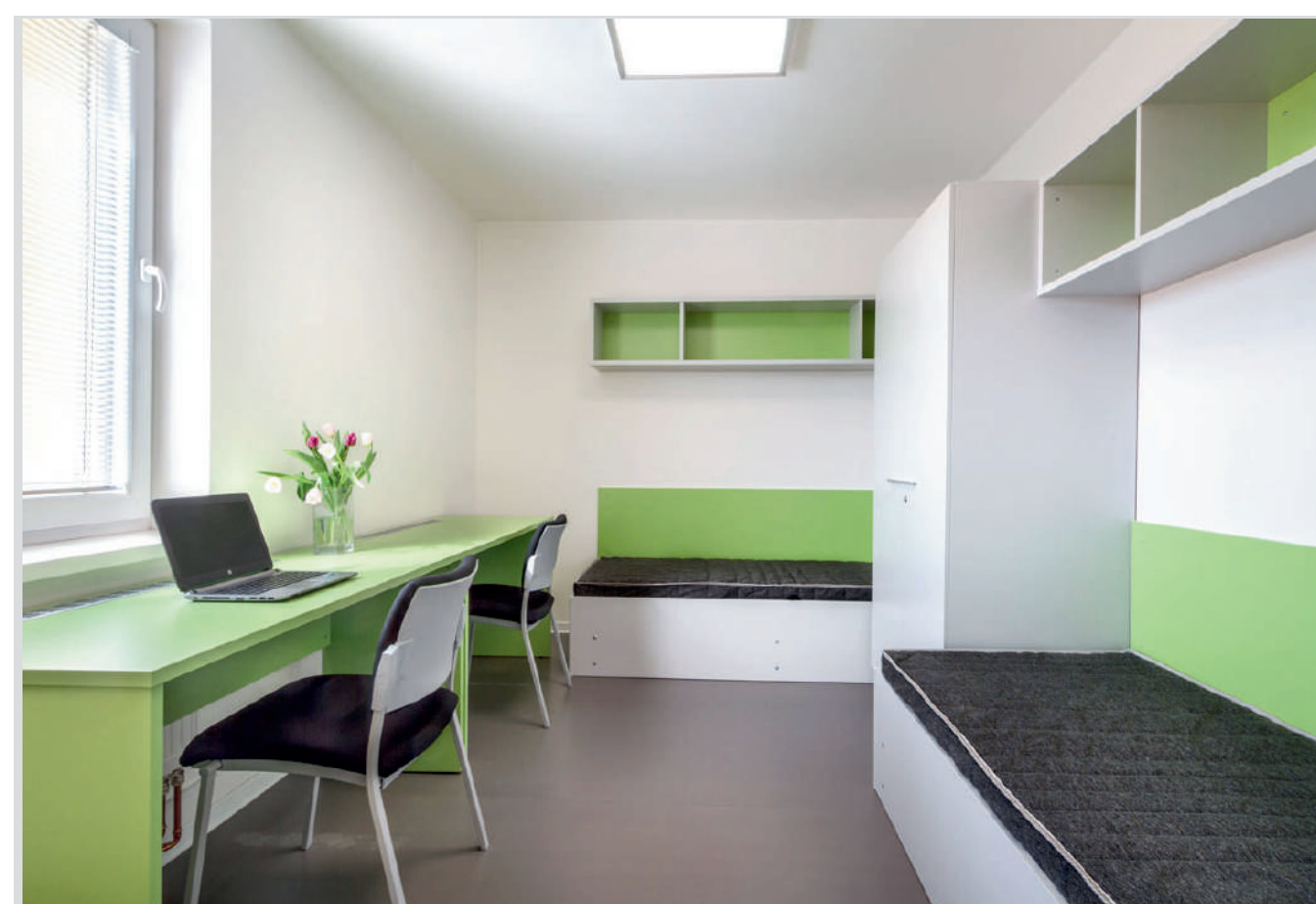
The student studio apartment has it all: high-quality furniture, equipped kitchen, a private bathroom, a desk, and, of course, super high-speed internet.



02 Apartments Strizkov 106 starting at 390 euro per month

Residence offers single, twin rooms and 2+2 blocks with private and shared bathroom. This comfortable residence offers study room, laundry and common area.

Every block and studios have equipped kitchen. All rooms are furnished and freshly renovated. Residence is situated 25 minutes from school.



03 Rooms|5 Dormitory Starting from 430 euros per month

Located in the Prague 5 district, it is near the Hůrka metro station on the yellow line.

There is an option to live in single, double, and two-person block rooms.

Each room is equipped with necessary furniture, a kitchen, a separate toilet, and a shower.



Czech republic
Prague Language Institute s.r.o
Politických vězňů 19, Praha 1
IČ: 02430355

